

The background of the advertisement is a photograph of a modern, bright interior. A large, square skylight in the ceiling allows natural light to flood the space, showing a blue sky with white clouds. Below the skylight, a kitchen area with light wood cabinetry and a dark countertop is visible. Two black, cylindrical pendant lights hang from the ceiling. In the foreground, a grey sofa is partially visible, and a small black side table holds a potted plant. A large, semi-transparent red graphic element covers the right side of the image, serving as a backdrop for the text.

Korniche Flat Glass

making light
work for you

korniche.co.uk



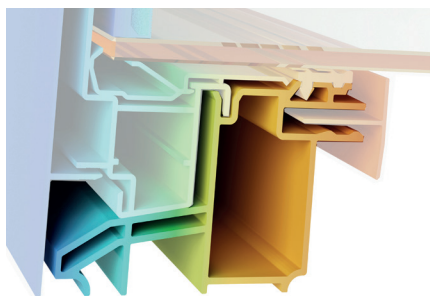
Illuminate Your Living Space

Brighten your home and experience the forefront of innovation with the Korniche Flat Glass. Create a welcoming space flooded by natural light.

Precision. Simplicity. Beauty.

Korniche crafts the most innovative products and offers a design aesthetic which exudes elegance and class. Under the skin, cutting edge engineering offers you something extra. Dive into a world where aesthetics and efficiency combine.

Beyond the visual appeal, the Korniche Flat Glass design stands out with exceptional thermal efficiency, credited to the advanced polymer inner frame section. Save money on your energy bills and enjoy a space that you can use all year round.



Thermal performance of the polyamide inner section, keeping the heat in and the cold out.

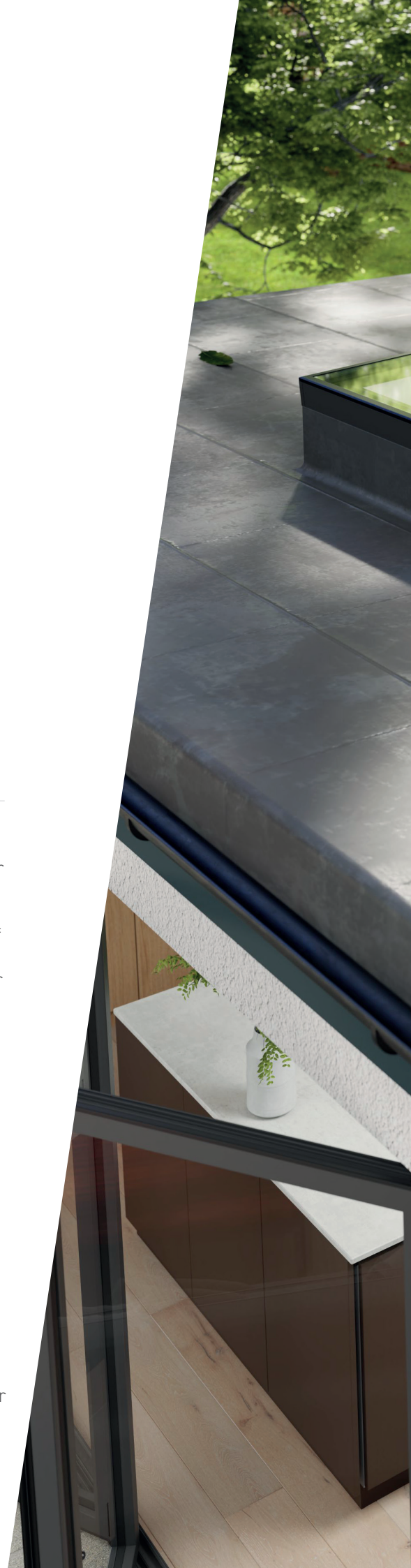
Perfectly suited to your project

Make our contemporary Flat Glass your own with a range of available facia and glass colours. Choose from double or triple glazing options and then decide if you want standard toughened glass, or perhaps add a laminated inner pane for added security. With Korniche you've got options, and whichever you choose we add an easy clean coating and high security as standard.

A flawless finish, that lasts

To really complete the job to a showroom standard, Korniche Flat Glass comes with a custom finishing trim that is clipped in place once the decorating is done. Every little detail has been thought of to make sure you get the best product, and the perfect look you demand.

It's fit and forget, but you never know what the future holds, so with Korniche you are covered with a 10 year warranty and no risk of redecorating thanks to our unique easy to replace glass unit*

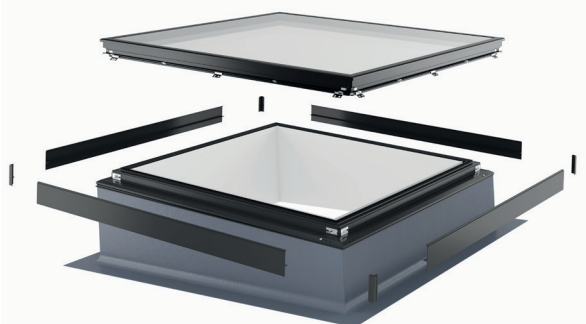




Easy installation with *unique replaceable glass unit

The Korniche Flat Glass is designed for ease of installation so you can enjoy the benefit of your build project being watertight in minutes. The frame arrives fully assembled and is simply positioned, screwed down and sealed before internal and external facias are clipped on, elegantly concealing joints and fastenings.

*The unique design means that the glass unit in the Korniche Flat Glass can be replaced easily, quickly and affordably without disturbing any décor or the original sealing of the product to your roof. No cutting, no bonding, no expensive ceramic edged glass units - Just peace of mind.



all in the detail . . .

Colours to reflect your style

Korniche Flat Glass offers a choice of readily available stock colours: Grey, Black, and White. For a more unique touch, Korniche also offer bespoke powder coated RAL colour finishes.

Complementing each colour is a black gloss bezel, meticulously framing the glass unit.

 White RAL 9910



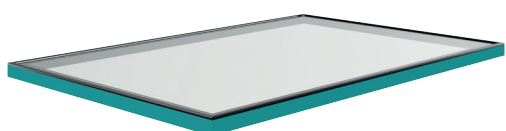
 Black RAL 9005



 Grey RAL 7016



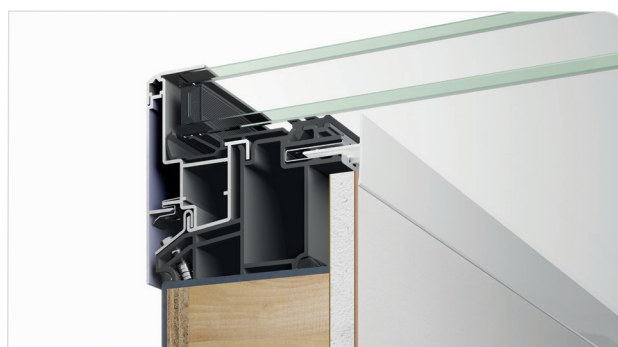
 Bespoke RAL options



Glazing tailored to your preference

Choose from double and triple glazed units available in a range of tints: clear, blue, or neutral, ensuring your aesthetic and functional needs are met.

For those seeking additional durability and safety, Korniche also offer laminated options. Self-clean coatings as standard reduce dirt adhesion and decrease the need for maintenance.



Security with proven standards

Your home's safety is non-negotiable. With Korniche Flat Glass, you're not just buying a fantastic, glazed product; you're investing in peace of mind. Meeting the stringent PAS 24:2020 standard, our Flat Glass offers enhanced protection against potential threats, helping shield both your valuables and your loved ones. For Korniche, security isn't a mere feature - it's foundational. The commitment to meeting and exceeding these established benchmarks allows you to confidently choose Korniche, knowing that you're placing the safety of your home in trusted hands.



specification

- ✓ PAS24: 2020 security as standard
- ✓ Industry leading thermal performance
- ✓ Sizes up to 3m long and 1.7m wide*
- ✓ 28mm double or 44mm triple glazing options
- ✓ A range of self-cleaning glass options in either toughened or laminated glass
- ✓ **Fascia colours:**
 - Grey matt RAL 7016
 - Black matt RAL 9005
 - White gloss RAL 9910
 - Bespoke RAL or BS colours
(additional cost and lead time)
- ✓ Internal cover trim for a perfect decorated finish edge
- ✓ Designed to work with a 3-to-5 degree pitch upstand

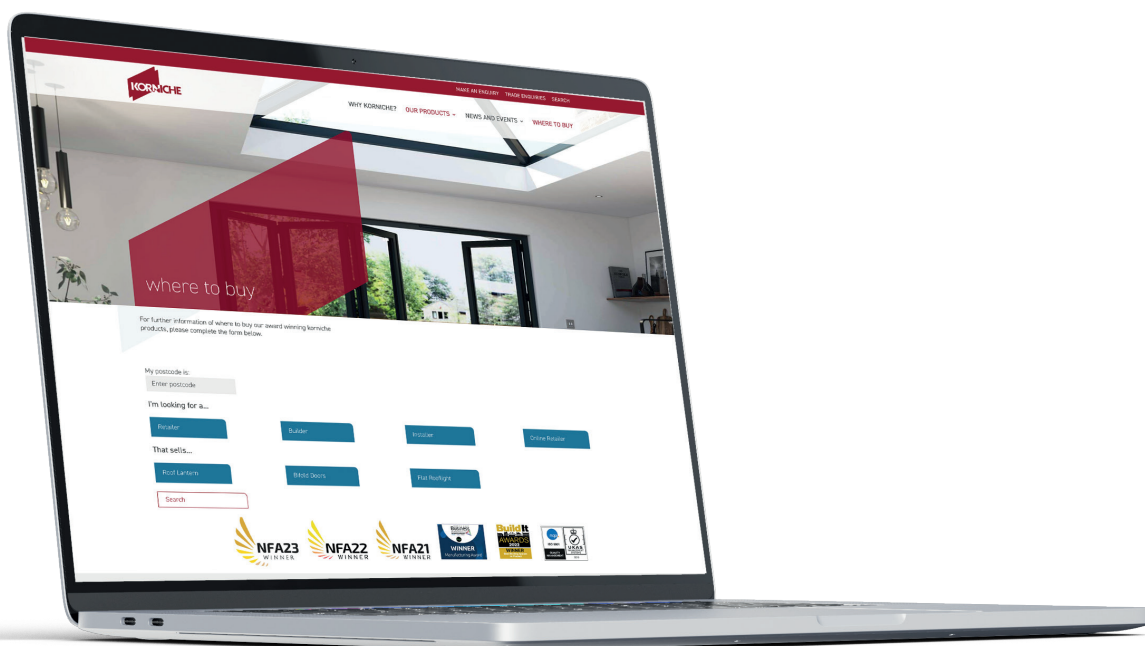
*Maximum area is limited to 3m²

Introducing 'Where to buy'TM

Simplifying Your Supplier Search

Navigating the maze of suppliers can be daunting. That's why we've introduced the **'Where to Buy'** on the Korniche website, developed with convenience in mind. By simply entering your postcode, choice of service and the desired product, **'Where to Buy'** will instantly generate a list of

suppliers, arranged from the nearest to the farthest. No more endless searching or guesswork. Find the right supplier in your area with just a few clicks. With Korniche, making an informed choice is easier and more efficient than ever.



WHERE TO BUY



For more information about Korniche products or further details about **'Where to Buy'** please visit the Korniche website.

www.korniche.co.uk